

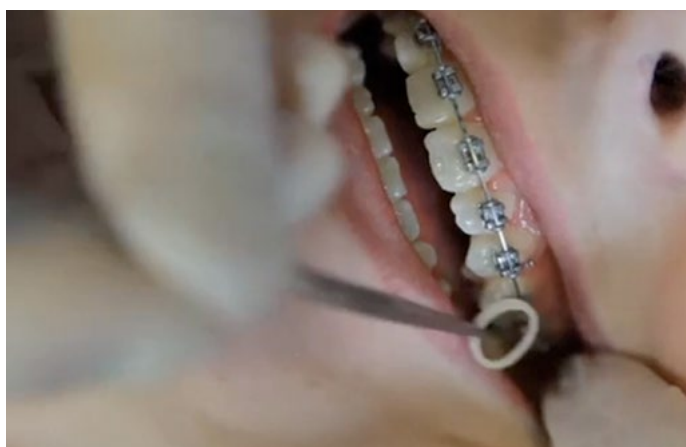
Brighter smiles. Brighter you.

# treatmentinformation



## Elastics.

Elastics are small rubber bands that usually go from the top brace to the bottom brace. We choose to use elastics because we want to get a very good bite.



### Fitting Elastics

There are several different ways to wear elastics, your orthodontist will show you the best way. Do not worry if you swallow one of the elastic bands it will not harm you and do come back into the practice if you require some more.



### Elastic Positions

This photo shows an elastic going from a top back tooth to a lower canine tooth. The elastics are attached to little hooks, fitted to the brace in the required position. The more hours in a day you wear your elastics, the quicker you will get the perfect result.

For more information and videos on this procedure and other orthodontic treatments please visit our website:

<http://confi-dent.co.uk/patients/educationalvideos.php>